



IVSA Newsletter

December 2023 Edition

LIKE OUR FACEBOOK PAGE

We would like to use social media to send out announcements and for school events. Please take a moment to like our Facebook page and follow IVSA.

YOU CAN ALSO FIND US ON LINKEDIN

December Updates

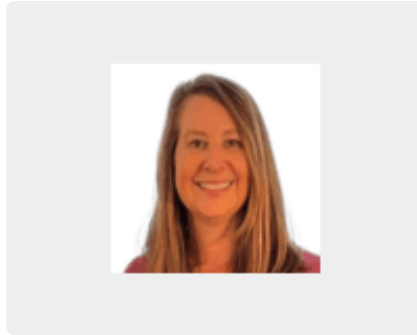
- [REGISTRATION](#) for January is available. Please register to ensure your student can enroll in the courses that they need!
- **ONBOARDING MEETINGS** for all new Full-Time Academy Students take place on Tuesdays (9am) and Thursdays (1pm). Please reach out to Mr. Grimes or Mrs. Elvers for an invitation.
- **SEMESTER ENDING:**
 - **AUGUST COHORT:** The end of Semester 1 is rapidly approaching for you. Please be sure to attend the "Connections" meetings to connect with your teachers in each of your core subjects!
 - **SEPTEMBER, OCTOBER, NOVEMBER, DECEMBER COHORTS:** There is still time left to "catch up" in your courses. Be sure to attend your "Connections" meetings in order to

make sure you understand the content and you know what assignments need to be completed. There is time over winter break to work to get caught up!

- While extensions are limited for extenuating circumstances, we want to remind you that there is an application if you should need to apply for an extension. Please be sure to apply soon if you would like to be considered. See our [Course Extension Request Policy](#).

Meet the IVSA Staff

Brenda Elvers is the **SCHOOL COUNSELOR** for IVSA. Mrs. Elvers is a graduate of the University of Illinois with a master's in Human Development Counseling. She has 30+ years of experience in education, with 20+ years as a school counselor. Mrs. Elvers is excited to be a part of the virtual realm of education, an area that is growing dramatically while offering amazing opportunities for our young people. In her free time, Mrs. Elvers enjoys spending time hiking with her husband, running, working out, and hanging out with her family.



Mrs. Elvers

Student Interest Groups & Clubs



eGaming Club

We have an eGAMING CLUB that is starting in January. We will participate in weekly gaming sessions among IVSA



Art Club

IVSA is starting an ART CLUB in January. Students will have an "art piece" to work on every other week. They will meet with the IVSA advisor every



**IVSA
BOOK & LOOK
CLUB**



Book & Look Club

We will also be starting a BOOK & LOOK club in January for IVSA students. Students will meet to discuss the book of the month that they have read and then watch the movie after reading the book. If you would like to register your student, please fill out the [registration form](#)

students and then compete in 5 online gaming tournaments with Elite Gaming LIVE. If you have not already registered, please be sure to fill out this [registration form](#).

other week to share their creations. If you would like to register your student, please fill out the [registration form](#).

Counselor's Cafe

Join Mrs. Elvers and Mr. Grimes for Onboarding Meetings on Tuesdays (9am) or Thursdays (1pm). Reach out to Mr. Grimes (kgrimes@ivsaschool.org) or Mrs. Elvers (belvers@ivsaschool.org) for the invitation.



Resources for Full-Time Academy Students



Varsity Tutors

Complementary Tutoring is provided by Varsity Tutors. If your student has not begun tutoring and would like to utilize this, please reach out to Mr. Grimes.
<https://www.varsitytutors.com/>



HELPme App

Students have access to this app that can assist them when they have a need, are in crisis, or want to report something to their school.
<https://www.stopitsolutions.com/helpme-k12>



Sown to Grow

IVSA utilizes the Sown to Grow Social Emotional Learning Curriculum.
<https://www.sowntogrow.com/>

Download the HELPme App to take advantage of this resource for students!



Event Information

IVSA Informational Meeting

Join us on any Thursday if you would like additional information about IVSA.

When?

Thursday, Dec 14, 2023, 02:00 PM

Where?

Zoom, reach out to mlundgaard@ivsaschool.org for the invitation

IVSA Important Dates

Upcoming Dates

December 25-January 8: Winter Break

January 9: Start of 2nd Semester (for many students)

January 15: Martin Luther King Jr. Day - school closed

February 19: President's Day - school closed

March 25-29: Spring Break

Illinois Virtual Academy | 2023-2024 CALENDAR

JULY '23 <table border="1"> <thead> <tr><th>S</th><th>M</th><th>T</th><th>W</th><th>Th</th><th>F</th><th>S</th></tr> </thead> <tbody> <tr><td></td><td></td><td></td><td></td><td></td><td></td><td>1</td></tr> <tr><td>2</td><td>3</td><td>4</td><td>5</td><td>6</td><td>7</td><td>8</td></tr> <tr><td>9</td><td>10</td><td>11</td><td>12</td><td>13</td><td>14</td><td>15</td></tr> <tr><td>16</td><td>17</td><td>18</td><td>19</td><td>20</td><td>21</td><td>22</td></tr> <tr><td>23</td><td>24</td><td>25</td><td>26</td><td>27</td><td>28</td><td>29</td></tr> <tr><td>30</td><td>31</td><td></td><td></td><td></td><td></td><td></td></tr> </tbody> </table>	S	M	T	W	Th	F	S							1	2	3	4	5	6	7	8	9	10	11	12	13	14	15	16	17	18	19	20	21	22	23	24	25	26	27	28	29	30	31						JANUARY '24 <table border="1"> <thead> <tr><th>S</th><th>M</th><th>T</th><th>W</th><th>Th</th><th>F</th><th>S</th></tr> </thead> <tbody> <tr><td></td><td>1</td><td>2</td><td>3</td><td>4</td><td>5</td><td>6</td></tr> <tr><td>7</td><td>8</td><td>9</td><td>10</td><td>11</td><td>12</td><td>13</td></tr> <tr><td>14</td><td>15</td><td>16</td><td>17</td><td>18</td><td>19</td><td>20</td></tr> <tr><td>21</td><td>22</td><td>23</td><td>24</td><td>25</td><td>26</td><td>27</td></tr> <tr><td>28</td><td>29</td><td>30</td><td>31</td><td></td><td></td><td></td></tr> </tbody> </table> <p>01-08 Winter Break - School Closed 15 MLK Day - School Closed</p> <p>17 instructional days</p>	S	M	T	W	Th	F	S		1	2	3	4	5	6	7	8	9	10	11	12	13	14	15	16	17	18	19	20	21	22	23	24	25	26	27	28	29	30	31										
S	M	T	W	Th	F	S																																																																																													
						1																																																																																													
2	3	4	5	6	7	8																																																																																													
9	10	11	12	13	14	15																																																																																													
16	17	18	19	20	21	22																																																																																													
23	24	25	26	27	28	29																																																																																													
30	31																																																																																																		
S	M	T	W	Th	F	S																																																																																													
	1	2	3	4	5	6																																																																																													
7	8	9	10	11	12	13																																																																																													
14	15	16	17	18	19	20																																																																																													
21	22	23	24	25	26	27																																																																																													
28	29	30	31																																																																																																
AUGUST '23 <table border="1"> <thead> <tr><th>S</th><th>M</th><th>T</th><th>W</th><th>Th</th><th>F</th><th>S</th></tr> </thead> <tbody> <tr><td></td><td></td><td>1</td><td>2</td><td>3</td><td>4</td><td>5</td></tr> <tr><td>6</td><td>7</td><td>8</td><td>9</td><td>10</td><td>11</td><td>12</td></tr> <tr><td>13</td><td>14</td><td>15</td><td>16</td><td>17</td><td>18</td><td>19</td></tr> <tr><td>20</td><td>21</td><td>22</td><td>23</td><td>24</td><td>25</td><td>26</td></tr> <tr><td>27</td><td>28</td><td>29</td><td>30</td><td>31</td><td></td><td></td></tr> </tbody> </table> <p>14-22 Staff In-Service 22 First Day of School</p> <p>8 instructional days</p>	S	M	T	W	Th	F	S			1	2	3	4	5	6	7	8	9	10	11	12	13	14	15	16	17	18	19	20	21	22	23	24	25	26	27	28	29	30	31			FEBRUARY '24 <table border="1"> <thead> <tr><th>S</th><th>M</th><th>T</th><th>W</th><th>Th</th><th>F</th><th>S</th></tr> </thead> <tbody> <tr><td></td><td></td><td></td><td></td><td>1</td><td>2</td><td>3</td></tr> <tr><td>4</td><td>5</td><td>6</td><td>7</td><td>8</td><td>9</td><td>10</td></tr> <tr><td>11</td><td>12</td><td>13</td><td>14</td><td>15</td><td>16</td><td>17</td></tr> <tr><td>18</td><td>19</td><td>20</td><td>21</td><td>22</td><td>23</td><td>24</td></tr> <tr><td>25</td><td>26</td><td>27</td><td>28</td><td>29</td><td></td><td></td></tr> </tbody> </table> <p>19 Presidents' Day - School Closed</p> <p>20 instructional days</p>	S	M	T	W	Th	F	S					1	2	3	4	5	6	7	8	9	10	11	12	13	14	15	16	17	18	19	20	21	22	23	24	25	26	27	28	29																
S	M	T	W	Th	F	S																																																																																													
		1	2	3	4	5																																																																																													
6	7	8	9	10	11	12																																																																																													
13	14	15	16	17	18	19																																																																																													
20	21	22	23	24	25	26																																																																																													
27	28	29	30	31																																																																																															
S	M	T	W	Th	F	S																																																																																													
				1	2	3																																																																																													
4	5	6	7	8	9	10																																																																																													
11	12	13	14	15	16	17																																																																																													
18	19	20	21	22	23	24																																																																																													
25	26	27	28	29																																																																																															
SEPTEMBER '23 <table border="1"> <thead> <tr><th>S</th><th>M</th><th>T</th><th>W</th><th>Th</th><th>F</th><th>S</th></tr> </thead> <tbody> <tr><td></td><td></td><td></td><td></td><td></td><td></td><td>1</td></tr> <tr><td>2</td><td>3</td><td>4</td><td>5</td><td>6</td><td>7</td><td>8</td></tr> <tr><td>9</td><td>10</td><td>11</td><td>12</td><td>13</td><td>14</td><td>15</td></tr> <tr><td>16</td><td>17</td><td>18</td><td>19</td><td>20</td><td>21</td><td>22</td></tr> <tr><td>23</td><td>24</td><td>25</td><td>26</td><td>27</td><td>28</td><td>29</td></tr> <tr><td>30</td><td>31</td><td></td><td></td><td></td><td></td><td></td></tr> </tbody> </table> <p>04 Labor Day - School Closed</p> <p>20 instructional days</p>	S	M	T	W	Th	F	S							1	2	3	4	5	6	7	8	9	10	11	12	13	14	15	16	17	18	19	20	21	22	23	24	25	26	27	28	29	30	31						MARCH '24 <table border="1"> <thead> <tr><th>S</th><th>M</th><th>T</th><th>W</th><th>Th</th><th>F</th><th>S</th></tr> </thead> <tbody> <tr><td></td><td></td><td></td><td></td><td></td><td></td><td>1</td></tr> <tr><td>2</td><td>3</td><td>4</td><td>5</td><td>6</td><td>7</td><td>8</td></tr> <tr><td>9</td><td>10</td><td>11</td><td>12</td><td>13</td><td>14</td><td>15</td></tr> <tr><td>16</td><td>17</td><td>18</td><td>19</td><td>20</td><td>21</td><td>22</td></tr> <tr><td>23</td><td>24</td><td>25</td><td>26</td><td>27</td><td>28</td><td>29</td></tr> <tr><td>30</td><td>31</td><td></td><td></td><td></td><td></td><td></td></tr> </tbody> </table> <p>25-29 Spring Break - School Closed</p> <p>16 instructional days</p>	S	M	T	W	Th	F	S							1	2	3	4	5	6	7	8	9	10	11	12	13	14	15	16	17	18	19	20	21	22	23	24	25	26	27	28	29	30	31					
S	M	T	W	Th	F	S																																																																																													
						1																																																																																													
2	3	4	5	6	7	8																																																																																													
9	10	11	12	13	14	15																																																																																													
16	17	18	19	20	21	22																																																																																													
23	24	25	26	27	28	29																																																																																													
30	31																																																																																																		
S	M	T	W	Th	F	S																																																																																													
						1																																																																																													
2	3	4	5	6	7	8																																																																																													
9	10	11	12	13	14	15																																																																																													
16	17	18	19	20	21	22																																																																																													
23	24	25	26	27	28	29																																																																																													
30	31																																																																																																		
OCTOBER '23 <table border="1"> <thead> <tr><th>S</th><th>M</th><th>T</th><th>W</th><th>Th</th><th>F</th><th>S</th></tr> </thead> <tbody> <tr><td>1</td><td>2</td><td>3</td><td>4</td><td>5</td><td>6</td><td>7</td></tr> <tr><td>8</td><td>9</td><td>10</td><td>11</td><td>12</td><td>13</td><td>14</td></tr> <tr><td>15</td><td>16</td><td>17</td><td>18</td><td>19</td><td>20</td><td>21</td></tr> <tr><td>22</td><td>23</td><td>24</td><td>25</td><td>26</td><td>27</td><td>28</td></tr> <tr><td>29</td><td>30</td><td>31</td><td></td><td></td><td></td><td></td></tr> </tbody> </table> <p>09 Indigenous Peoples' Day - School Closed</p> <p>21 instructional days</p>	S	M	T	W	Th	F	S	1	2	3	4	5	6	7	8	9	10	11	12	13	14	15	16	17	18	19	20	21	22	23	24	25	26	27	28	29	30	31					APRIL '24 <table border="1"> <thead> <tr><th>S</th><th>M</th><th>T</th><th>W</th><th>Th</th><th>F</th><th>S</th></tr> </thead> <tbody> <tr><td></td><td>1</td><td>2</td><td>3</td><td>4</td><td>5</td><td>6</td></tr> <tr><td>7</td><td>8</td><td>9</td><td>10</td><td>11</td><td>12</td><td>13</td></tr> <tr><td>14</td><td>15</td><td>16</td><td>17</td><td>18</td><td>19</td><td>20</td></tr> <tr><td>21</td><td>22</td><td>23</td><td>24</td><td>25</td><td>26</td><td>27</td></tr> <tr><td>28</td><td>29</td><td>30</td><td></td><td></td><td></td><td></td></tr> </tbody> </table> <p>1-15 iReady Assessments Window</p> <p>22 instructional days</p>	S	M	T	W	Th	F	S		1	2	3	4	5	6	7	8	9	10	11	12	13	14	15	16	17	18	19	20	21	22	23	24	25	26	27	28	29	30																		
S	M	T	W	Th	F	S																																																																																													
1	2	3	4	5	6	7																																																																																													
8	9	10	11	12	13	14																																																																																													
15	16	17	18	19	20	21																																																																																													
22	23	24	25	26	27	28																																																																																													
29	30	31																																																																																																	
S	M	T	W	Th	F	S																																																																																													
	1	2	3	4	5	6																																																																																													
7	8	9	10	11	12	13																																																																																													
14	15	16	17	18	19	20																																																																																													
21	22	23	24	25	26	27																																																																																													
28	29	30																																																																																																	
NOVEMBER '23 <table border="1"> <thead> <tr><th>S</th><th>M</th><th>T</th><th>W</th><th>Th</th><th>F</th><th>S</th></tr> </thead> <tbody> <tr><td></td><td></td><td></td><td>1</td><td>2</td><td>3</td><td>4</td></tr> <tr><td>5</td><td>6</td><td>7</td><td>8</td><td>9</td><td>10</td><td>11</td></tr> <tr><td>12</td><td>13</td><td>14</td><td>15</td><td>16</td><td>17</td><td>18</td></tr> <tr><td>19</td><td>20</td><td>21</td><td>22</td><td>23</td><td>24</td><td>25</td></tr> <tr><td>26</td><td>27</td><td>28</td><td>29</td><td>30</td><td></td><td></td></tr> </tbody> </table> <p>1-15 iReady Assessments Window 22-24 Thanksgiving Holidays - School Closed</p> <p>19 instructional days</p>	S	M	T	W	Th	F	S				1	2	3	4	5	6	7	8	9	10	11	12	13	14	15	16	17	18	19	20	21	22	23	24	25	26	27	28	29	30			MAY '24 <table border="1"> <thead> <tr><th>S</th><th>M</th><th>T</th><th>W</th><th>Th</th><th>F</th><th>S</th></tr> </thead> <tbody> <tr><td></td><td></td><td></td><td></td><td>1</td><td>2</td><td>3</td></tr> <tr><td>4</td><td>5</td><td>6</td><td>7</td><td>8</td><td>9</td><td>10</td></tr> <tr><td>11</td><td>12</td><td>13</td><td>14</td><td>15</td><td>16</td><td>17</td></tr> <tr><td>18</td><td>19</td><td>20</td><td>21</td><td>22</td><td>23</td><td>24</td></tr> <tr><td>25</td><td>26</td><td>27</td><td>28</td><td>29</td><td>30</td><td>31</td></tr> </tbody> </table> <p>24 Last Day of School 27 Memorial Day - School Closed 28-31 Staff In-Service</p> <p>18 instructional days</p>	S	M	T	W	Th	F	S					1	2	3	4	5	6	7	8	9	10	11	12	13	14	15	16	17	18	19	20	21	22	23	24	25	26	27	28	29	30	31														
S	M	T	W	Th	F	S																																																																																													
			1	2	3	4																																																																																													
5	6	7	8	9	10	11																																																																																													
12	13	14	15	16	17	18																																																																																													
19	20	21	22	23	24	25																																																																																													
26	27	28	29	30																																																																																															
S	M	T	W	Th	F	S																																																																																													
				1	2	3																																																																																													
4	5	6	7	8	9	10																																																																																													
11	12	13	14	15	16	17																																																																																													
18	19	20	21	22	23	24																																																																																													
25	26	27	28	29	30	31																																																																																													
DECEMBER '23 <table border="1"> <thead> <tr><th>S</th><th>M</th><th>T</th><th>W</th><th>Th</th><th>F</th><th>S</th></tr> </thead> <tbody> <tr><td></td><td></td><td></td><td></td><td></td><td></td><td>1</td></tr> <tr><td>2</td><td>3</td><td>4</td><td>5</td><td>6</td><td>7</td><td>8</td></tr> <tr><td>9</td><td>10</td><td>11</td><td>12</td><td>13</td><td>14</td><td>15</td></tr> <tr><td>16</td><td>17</td><td>18</td><td>19</td><td>20</td><td>21</td><td>22</td></tr> <tr><td>23</td><td>24</td><td>25</td><td>26</td><td>27</td><td>28</td><td>29</td></tr> <tr><td>30</td><td>31</td><td></td><td></td><td></td><td></td><td></td></tr> </tbody> </table> <p>25-January 8 Winter Break - School Closed</p> <p>16 instructional days</p>	S	M	T	W	Th	F	S							1	2	3	4	5	6	7	8	9	10	11	12	13	14	15	16	17	18	19	20	21	22	23	24	25	26	27	28	29	30	31						JUNE '24 <table border="1"> <thead> <tr><th>S</th><th>M</th><th>T</th><th>W</th><th>Th</th><th>F</th><th>S</th></tr> </thead> <tbody> <tr><td></td><td></td><td></td><td></td><td></td><td></td><td>1</td></tr> <tr><td>2</td><td>3</td><td>4</td><td>5</td><td>6</td><td>7</td><td>8</td></tr> <tr><td>9</td><td>10</td><td>11</td><td>12</td><td>13</td><td>14</td><td>15</td></tr> <tr><td>16</td><td>17</td><td>18</td><td>19</td><td>20</td><td>21</td><td>22</td></tr> <tr><td>23</td><td>24</td><td>25</td><td>26</td><td>27</td><td>28</td><td>29</td></tr> <tr><td>30</td><td></td><td></td><td></td><td></td><td></td><td></td></tr> </tbody> </table> <p>177 Total Instructional Days</p>	S	M	T	W	Th	F	S							1	2	3	4	5	6	7	8	9	10	11	12	13	14	15	16	17	18	19	20	21	22	23	24	25	26	27	28	29	30						
S	M	T	W	Th	F	S																																																																																													
						1																																																																																													
2	3	4	5	6	7	8																																																																																													
9	10	11	12	13	14	15																																																																																													
16	17	18	19	20	21	22																																																																																													
23	24	25	26	27	28	29																																																																																													
30	31																																																																																																		
S	M	T	W	Th	F	S																																																																																													
						1																																																																																													
2	3	4	5	6	7	8																																																																																													
9	10	11	12	13	14	15																																																																																													
16	17	18	19	20	21	22																																																																																													
23	24	25	26	27	28	29																																																																																													
30																																																																																																			



Illinois Virtual Schools & Academy

The mission of IVSA is to provide a supportive and engaging online learning community for students that is based on highest-quality instruction, rigorous curricula and courses, and connected learning experiences. We are committed to partnering with local schools and districts to deliver virtual and hybrid learning options that meet the needs of each individual learner.

Website: <https://ivsaschool.org/>

Support Phone Number: 224-433-7148

Enrollment Phone Number: 866-890-4872

Facebook: <https://www.facebook.com/illinoisvirtual>



Melissa Lundgaard

Melissa is using Smore to create beautiful newsletters

